

Mobile unit for filtering tanks with electric pump for diesel AT11611/XXX/E series



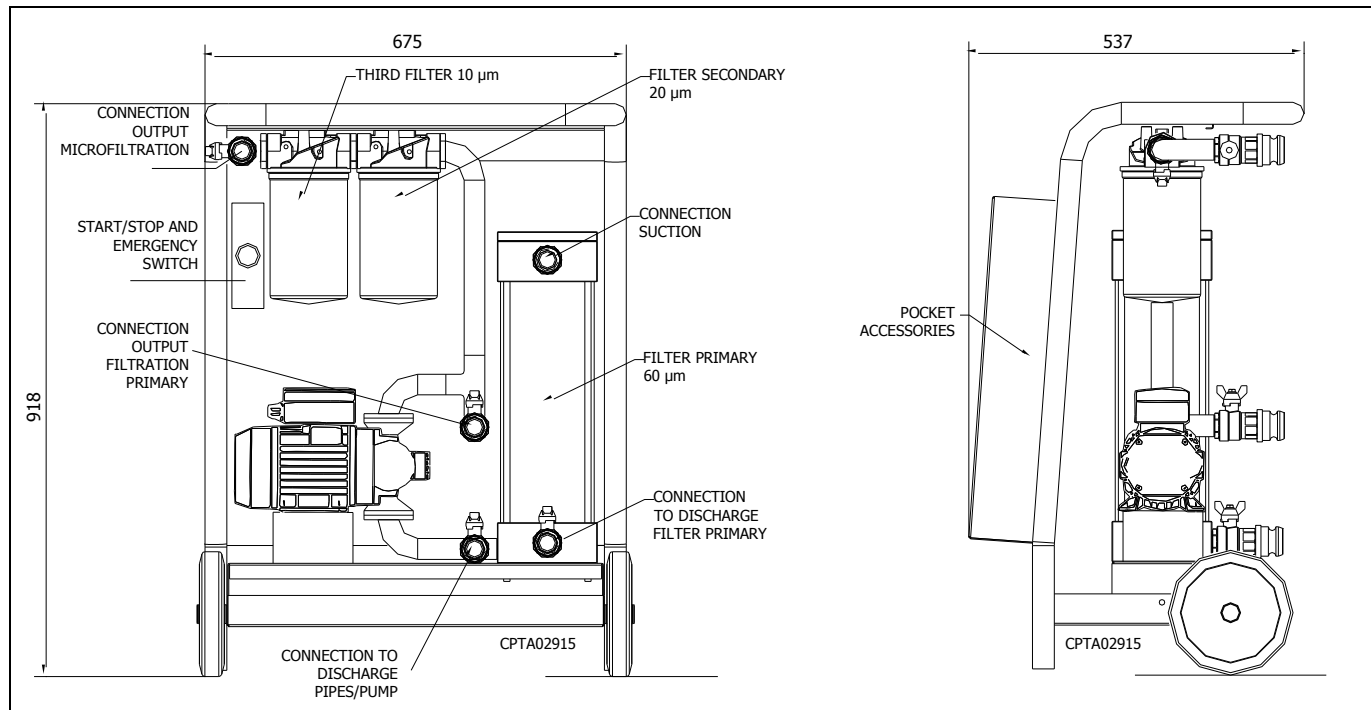
This equipment is used for cleaning the tanks without removing the product from the inside.

A tube with rigid dipstick is positioned on the bottom of the tank and used to suck the product that is treated by a series of filters with different characteristics to then be sent back to the tank.

Technical specifications

• Power supply	230 VAC ± 5%, 1,1 kW (/070) 1,4 kW (/100) ÷ 2 kW (/150)
• Switch	250 VAC 16 A with release coil for under voltage
• Flow	70÷150 l/min (depending on the model)
• Max pressure	1,4 bar (/070) 1,7 bar (/100) 3 bar (/150)
• Input filter	60 µm
• Capacity filtration secondary (microfiltration)	20 µm, 10 µm

Dimensions



Accessories

AT16511/34	Conductive vacuum hose 3/4", length 2,5 m (for model /070)
AT16511/10	Conductive vacuum hose 1", length 5 m (for model /100 and /150)
AT16611/34	Delivery hose conductive 3/4", length 2,5 m (for model /070)
AT16611/10	Delivery hose conductive 1", length 5 m (for model /100 and /150)
AT18217	By-pass hose, length 1 m
AT16711	Suction rod 1" rigid length 15 cm

Options

AT17211	Cartridge secondary filter spin-on fiber 6 µm
AT16811	Digital meter, accuracy ± 1%

Codes

AT11611	/MAX FLOW	/VERSION	/SAFETY ZONE	/METER
	/070: 70 l/min /100: 120 l/min /150: 150 l/min	/E: electric	/2: zone 2 (only diesel)	/S: without meter /M: with meter

Specification subject to change without notice